

Supplementary Material

Table S1. Location data and labelling for the samples included in this study. Samples with an * by the coordinates are approximate based on collection location (units are the New Zealand TM map grid).

ID	Species	Island	EastTM	NorthTM
1	<i>C. selloana</i>	SI	1540556.5	5147039.8
2	<i>C. selloana</i>	SI	1458427.4	5114435.6
3	<i>C. selloana</i>	SI	1561258.0	5165936.1
4	<i>C. selloana</i>	SI	1519935.8	5154382.6
5	<i>C. selloana</i>	SI	1459991.8	5086094.9
6	<i>C. selloana</i>	SI	1485882.0	5127387.4
7	<i>C. selloana</i>	SI	1273398.9	4900132.9
8	<i>C. selloana</i>	SI	1273398.9	4900132.9
9	<i>C. selloana</i>	SI	1273398.9	4900132.9
10	<i>C. selloana</i>	SI	1273398.9	4900132.9
11	<i>C. selloana</i>	SI	1338737.4	4873879.6
12	<i>C. selloana</i>	SI	1338737.4	4873879.6
13	<i>C. selloana</i>	SI	1278809.4	4872297.0
14	<i>C. selloana</i>	SI	1278809.4	4872297.0
15	<i>C. selloana</i>	SI	1257389.6	4857035.1
16	<i>C. selloana</i>	SI	1257389.6	4857035.1
17	<i>C. selloana</i>	SI	1244580.2	4827555.2
18	<i>C. selloana</i>	SI	1683724.6	5428737.9
19	<i>C. selloana</i>	SI	1192740.4	4949645.6
20	<i>C. selloana</i>	SI	1192740.4	4949645.6
21	<i>C. selloana</i>	SI	1603736.4	5441156.3
22	<i>C. selloana</i>	SI	1610537.1	5429348.4
23	<i>C. selloana</i>	SI	1683722.3	5428736.3
24	<i>C. selloana</i>	SI	1687525.4	5394899.5
25	<i>C. selloana</i>	SI	1689830.9	5387486.5
26	<i>C. selloana</i>	SI	1676322.3	5382310.5
27	<i>C. selloana</i>	SI	1587922.4	5477908.1
28	<i>C. selloana</i>	SI	1471662.3	5374058.5
29	<i>C. selloana</i>	SI	1534316.2	5374080.6
30	<i>C. selloana</i>	SI	1523506.6	5425341.6
31	<i>C. selloana</i>	SI	1622801.1	5431824.5
32	<i>C. selloana</i>	SI	1623244.7	5432798.6 *
33	<i>C. selloana</i>	SI	1623244.7	5432798.6 *
34	<i>C. selloana</i>	SI	1623244.7	5432798.6 *
35	<i>C. selloana</i>	SI	1623244.7	5432798.6 *
36	<i>C. selloana</i>	SI	1267119.1	4861632.1
37	<i>C. selloana</i>	SI	1267119.1	4861632.1
38	<i>C. selloana</i>	SI	1267119.1	4861632.1
39	<i>C. selloana</i>	SI	1259079.0	4859122.0
40	<i>C. selloana</i>	SI	1259079.0	4859122.0
41	<i>C. selloana</i>	SI	1258980.0	4860732.0
42	<i>C. selloana</i>	SI	1258980.0	4860732.0
43	<i>C. selloana</i>	SI	1258908.0	4862070.0
44	<i>C. selloana</i>	SI	1258908.0	4862070.0
45	<i>C. selloana</i>	SI	1258908.0	4862070.0
46	<i>C. selloana</i>	SI	1258908.0	4862070.0
47	<i>C. selloana</i>	SI	1258839.0	4863190.0
48	<i>C. selloana</i>	SI	1258839.0	4863190.0
49	<i>C. selloana</i>	NI	2032702.8	5712622.2
50	<i>C. selloana</i>	NI	1782638.3	5829484.7
51	<i>C. selloana</i>	NI	1952571.7	5792867.8
52	<i>C. selloana</i>	NI	1743683.4	6005958.9
53	<i>C. selloana</i>	NI	1732213.6	6019658.0
54	<i>C. selloana</i>	NI	1756145.0	5925184.7
55	<i>C. selloana</i>	NI	1762459.8	5920639.9
56	<i>C. selloana</i>	NI	1762136.0	5918377.0
57	<i>C. selloana</i>	NI	1758441.0	5919788.0
58	<i>C. selloana</i>	NI	1780818.0	5926357.6
59	<i>C. selloana</i>	NI	1780818.0	5926357.6
60	<i>C. selloana</i>	NI	1785704.9	5923596.6
61	<i>C. selloana</i>	NI	1775385.0	5903527.0
62	<i>C. selloana</i>	NI	1775385.0	5903527.0
63	<i>C. selloana</i>	NI	1769708.0	5898595.0

ID	Species	Island	EastTM	NorthTM
64	<i>C. selloana</i>	NI	1769708.0	5898595.0
65	<i>C. selloana</i>	NI	1763538.0	5884601.0
66	<i>C. selloana</i>	NI	1763538.0	5884601.0
67	<i>C. selloana</i>	NI	1749288.0	5882751.0
68	<i>C. selloana</i>	NI	1749288.0	5882751.0
69	<i>C. selloana</i>	NI	1749288.0	5882751.0
70	<i>C. selloana</i>	NI	1749288.0	5882751.0
71	<i>C. selloana</i>	NI	1749288.0	5882751.0
72	<i>C. selloana</i>	NI	1749288.0	5882751.0
73	<i>C. selloana</i>	NI	1745613.0	5892053.0
74	<i>C. selloana</i>	NI	1745613.0	5892053.0
75	<i>C. selloana</i>	NI	1930711.0	5798190.0
76	<i>C. selloana</i>	NI	1930711.0	5798190.0
77	<i>C. selloana</i>	NI	1940953.0	5787491.0
78	<i>C. selloana</i>	NI	1940953.0	5787491.0
79	<i>C. selloana</i>	NI	1955162.0	5774631.0
80	<i>C. selloana</i>	NI	1955162.0	5774631.0
81	<i>C. selloana</i>	NI	1831274.0	5796314.0
82	<i>C. selloana</i>	NI	1831274.0	5796314.0
83	<i>C. selloana</i>	NI	1843062.0	5799532.0
84	<i>C. selloana</i>	NI	1843062.0	5799532.0
85	<i>C. selloana</i>	NI	1953200.0	5791211.0
86	<i>C. selloana</i>	NI	1953200.0	5791211.0
87	<i>C. selloana</i>	NI	1961164.0	5780858.0
88	<i>C. selloana</i>	NI	1961164.0	5780858.0
89	<i>C. selloana</i>	NI	1745790.0	5909030.0
90	<i>C. selloana</i>	NI	1929840.0	5745500.0
91	<i>C. selloana</i>	NI	1929840.0	5745500.0
92	<i>C. selloana</i>	NI	1879466.1	5825541.5
93	<i>C. selloana</i>	NI	1879466.1	5825541.5
94	<i>C. selloana</i>	NI	1882352.9	5827442.6
95	<i>C. selloana</i>	NI	1882352.9	5827442.6
96	<i>C. selloana</i>	NI	1884530.5	5823801.7
97	<i>C. selloana</i>	NI	1884530.5	5823801.7
98	<i>C. selloana</i>	NI	1890657.0	5818962.2
99	<i>C. selloana</i>	NI	1890657.0	5818962.2
100	<i>C. selloana</i>	NI	1892838.2	5813106.2
101	<i>C. selloana</i>	NI	1892838.2	5813106.2
102	<i>C. selloana</i>	NI	1897218.5	5815652.4
103	<i>C. selloana</i>	NI	1897218.5	5815652.4
104	<i>C. selloana</i>	NI	1900217.2	5808645.5
105	<i>C. selloana</i>	NI	1900217.2	5808645.5
106	<i>C. selloana</i>	NI	1915689.0	5827155.2
107	<i>C. selloana</i>	NI	1915689.0	5827155.2
108	<i>C. selloana</i>	NI	1874344.0	5815540.4
109	<i>C. selloana</i>	NI	1874344.0	5815540.4
110	<i>C. selloana</i>	NI	1868378.9	5813148.3
111	<i>C. selloana</i>	NI	1868378.9	5813148.3
112	<i>C. selloana</i>	NI	1870433.9	5817136.1
113	<i>C. selloana</i>	NI	1870433.9	5817136.1
114	<i>C. selloana</i>	NI	1874923.3	5824811.4
115	<i>C. selloana</i>	NI	1874923.3	5824811.4
116	<i>C. selloana</i>	NI	1874923.3	5824811.4
117	<i>C. selloana</i>	NI	1874923.3	5824811.4
118	<i>C. selloana</i>	NI	1874923.3	5824811.4
119	<i>C. selloana</i>	NI	1874923.3	5824811.4
120	<i>C. selloana</i>	NI	1874923.3	5824811.4
121	<i>C. selloana</i>	NI	1874923.3	5824811.4
122	<i>C. selloana</i>	NI	1717970.0	6042686.0
123	<i>C. selloana</i>	NI	1717970.0	6042686.0
124	<i>C. selloana</i>	NI	1738414.0	6044755.0
125	<i>C. selloana</i>	NI	1738414.0	6044755.0
126	<i>C. selloana</i>	NI	1734299.0	6040673.0
127	<i>C. selloana</i>	NI	1734299.0	6040673.0
128	<i>C. selloana</i>	NI	1739228.0	6042478.0
129	<i>C. selloana</i>	NI	1739228.0	6042478.0
130	<i>C. selloana</i>	NI	1680380.0	6029467.0
131	<i>C. selloana</i>	NI	1680380.0	6029467.0

ID	Species	Island	EastTM	NorthTM
132	<i>C. selloana</i>	NI	1684843.0	6031790.0
133	<i>C. selloana</i>	NI	1684843.0	6031790.0
134	<i>C. selloana</i>	NI	1683354.0	6036936.0
135	<i>C. selloana</i>	NI	1683354.0	6036936.0
136	<i>C. selloana</i>	NI	1722210.0	6048386.0
137	<i>C. selloana</i>	NI	1722210.0	6048386.0
138	<i>C. selloana</i>	NI	1722210.0	6048386.0
139	<i>C. selloana</i>	NI	1722210.0	6048386.0
140	<i>C. selloana</i>	NI	1722210.0	6048386.0
141	<i>C. selloana</i>	NI	1722210.0	6048386.0
142	<i>C. selloana</i>	NI	2013531.0	5812510.0
143	<i>C. selloana</i>	NI	2013531.0	5812510.0
144	<i>C. selloana</i>	NI	2005841.0	5793008.0
145	<i>C. selloana</i>	NI	2005841.0	5793008.0
146	<i>C. selloana</i>	NI	2005841.0	5803090.0
147	<i>C. selloana</i>	NI	2005841.0	5803090.0
148	<i>C. selloana</i>	NI	1932681.0	5785735.0
149	<i>C. selloana</i>	NI	1932681.0	5785735.0
150	<i>C. selloana</i>	NI	1872430.0	5824586.0
151	<i>C. selloana</i>	NI	1872430.0	5824586.0
152	<i>C. selloana</i>	NI	1859754.0	5933649.0
153	<i>C. selloana</i>	NI	1859754.0	5933649.0
154	<i>C. selloana</i>	NI	1870032.0	5823537.0
155	<i>C. selloana</i>	NI	1870032.0	5823537.0
156	<i>C. selloana</i>	NI	1866400.0	5827460.0
157	<i>C. selloana</i>	NI	1866400.0	5827460.0
158	<i>C. selloana</i>	NI	1861744.0	5829001.0
159	<i>C. selloana</i>	NI	1861744.0	5829001.0
160	<i>C. selloana</i>	NI	1853086.0	5838049.0
161	<i>C. selloana</i>	NI	1857431.0	5840048.0
162	<i>C. selloana</i>	NI	1857431.0	5840048.0
163	<i>C. selloana</i>	NI	1857512.0	5842737.0
164	<i>C. selloana</i>	NI	1857512.0	5842737.0
165	<i>C. selloana</i>	NI	1862451.0	5844923.0
166	<i>C. selloana</i>	NI	1862451.0	5844923.0
167	<i>C. selloana</i>	NI	1858958.0	5850196.0
168	<i>C. selloana</i>	NI	1858958.0	5850196.0
169	<i>C. selloana</i>	NI	1861620.0	5853821.0
170	<i>C. selloana</i>	NI	1861620.0	5853821.0
171	<i>C. selloana</i>	NI	1864029.0	5849290.0
172	<i>C. selloana</i>	NI	1864029.0	5849290.0
173	<i>C. selloana</i>	NI	1951465.5	5771048.7 *
174	<i>C. selloana</i>	NI	1837162.0	5926385.0
175	<i>C. selloana</i>	NI	1837162.0	5926385.0
176	<i>C. selloana</i>	NI	1837162.0	5926385.0
177	<i>C. selloana</i>	NI	1837162.0	5926385.0
178	<i>C. selloana</i>	NI	1832448.0	5925141.0
179	<i>C. selloana</i>	NI	1832448.0	5925141.0
180	<i>C. selloana</i>	NI	1832448.0	5925141.0
181	<i>C. selloana</i>	NI	1848118.0	5932643.0
182	<i>C. selloana</i>	NI	1848118.0	5932643.0
183	<i>C. selloana</i>	NI	1865104.0	5546617.5
184	<i>C. selloana</i>	NI	1868147.1	5550369.7
185	<i>C. selloana</i>	NI	1883666.8	5565082.2
186	<i>C. selloana</i>	NI	1895129.7	5584049.1
187	<i>C. selloana</i>	NI	1902985.5	5599216.4
188	<i>C. selloana</i>	NI	1923746.4	5603838.5
189	<i>C. selloana</i>	NI	1941036.1	5588245.1
190	<i>C. selloana</i>	NI	1913465.5	5657537.6
191	<i>C. selloana</i>	NI	1853189.5	5580998.3
192	<i>C. selloana</i>	NI	1853189.5	5580998.3
193	<i>C. selloana</i>	NI	1853189.5	5580998.3
194	<i>C. selloana</i>	NI	1795206.2	5580118.8
195	<i>C. selloana</i>	NI	1795206.2	5580118.8
196	<i>C. selloana</i>	NI	1795206.2	5580118.8
197	<i>C. selloana</i>	NI	1808182.4	5555421.5
198	<i>C. selloana</i>	NI	1808182.4	5555421.5
199	<i>C. selloana</i>	NI	1808182.4	5555421.5

ID	Species	Island	EastTM	NorthTM
200	<i>C. selloana</i>	NI	1623362.0	6114258.0
201	<i>C. selloana</i>	NI	1623362.0	6114258.0
202	<i>C. selloana</i>	NI	1623362.0	6114258.0
203	<i>C. selloana</i>	NI	1849746.1	5592809.1
204	<i>C. selloana</i>	NI	1849746.1	5592809.1
205	<i>C. selloana</i>	NI	1849746.1	5592809.1
206	<i>C. selloana</i>	NI	1824713.7	5577331.5
207	<i>C. selloana</i>	NI	1824713.7	5577331.5
208	<i>C. selloana</i>	NI	1824713.7	5577331.5
209	<i>C. selloana</i>	NI	1824713.7	5577331.5
210	<i>C. selloana</i>	NI	1824713.7	5577331.5
211	<i>C. selloana</i>	NI	1824713.7	5577331.5
212	<i>C. selloana</i>	NI	1839488.3	5590083.3
213	<i>C. selloana</i>	NI	1839488.3	5590083.3
214	<i>C. selloana</i>	NI	1839488.3	5590083.3
215	<i>C. selloana</i>	NI	1838903.1	5605563.0
216	<i>C. selloana</i>	NI	1829884.1	5628096.5
217	<i>C. selloana</i>	NI	1829884.1	5628096.5
218	<i>C. selloana</i>	NI	1829884.1	5628096.5
219	<i>C. selloana</i>	NI	1776250.4	5580813.2
220	<i>C. selloana</i>	NI	1776250.4	5580813.2
221	<i>C. selloana</i>	NI	1776250.4	5580813.2
222	<i>C. selloana</i>	NI	1758178.4	5593775.6
223	<i>C. selloana</i>	NI	1758178.4	5593775.6
224	<i>C. selloana</i>	NI	1758178.4	5593775.6
225	<i>C. selloana</i>	NI	1765584.1	5596119.0
226	<i>C. selloana</i>	NI	1765584.1	5596119.0
227	<i>C. selloana</i>	NI	1785572.3	5595482.4
228	<i>C. selloana</i>	NI	1785572.3	5595482.4
229	<i>C. selloana</i>	NI	1785572.3	5595482.4
230	<i>C. selloana</i>	NI	1796580.8	5592856.3
231	<i>C. selloana</i>	NI	1796580.8	5592856.3
232	<i>C. selloana</i>	NI	1796580.8	5592856.3
233	<i>C. selloana</i>	NI	1914804.2	5775705.7
234	<i>C. selloana</i>	NI	1914804.2	5775705.7
235	<i>C. selloana</i>	NI	1914804.2	5775705.7
236	<i>C. selloana</i>	NI	1916075.3	5780780.3
237	<i>C. selloana</i>	NI	1916075.3	5780780.3
238	<i>C. selloana</i>	NI	1916075.3	5780780.3
239	<i>C. selloana</i>	NI	1931494.7	5783677.3
240	<i>C. selloana</i>	NI	1931494.7	5783677.3
241	<i>C. selloana</i>	NI	1931494.7	5783677.3
242	<i>C. selloana</i>	NI	1934957.7	5777814.9
243	<i>C. selloana</i>	NI	1934957.7	5777814.9
244	<i>C. selloana</i>	NI	1922612.9	5737630.0
245	<i>C. selloana</i>	NI	1922612.9	5737630.0
246	<i>C. selloana</i>	NI	1922612.9	5737630.0
247	<i>C. selloana</i>	NI	1716816.0	5642213.0
248	<i>C. selloana</i>	NI	1716816.0	5642213.0
249	<i>C. selloana</i>	NI	1716816.0	5642213.0
250	<i>C. selloana</i>	NI	1799882.0	5693896.0
251	<i>C. selloana</i>	NI	1799882.0	5693896.0
252	<i>C. selloana</i>	NI	1799882.0	5693896.0
253	<i>C. selloana</i>	NI	1802831.0	5689976.0
254	<i>C. selloana</i>	NI	1802831.0	5689976.0
255	<i>C. selloana</i>	NI	1802831.0	5689976.0
256	<i>C. selloana</i>	NI	1806961.0	5687595.0
257	<i>C. selloana</i>	NI	1806961.0	5687595.0
258	<i>C. selloana</i>	NI	1806961.0	5687595.0
259	<i>C. selloana</i>	NI	1800807.0	5678214.0
260	<i>C. selloana</i>	NI	1800807.0	5678214.0
261	<i>C. selloana</i>	NI	1800807.0	5678214.0
262	<i>C. selloana</i>	NI	1796030.0	5677278.0
263	<i>C. selloana</i>	NI	1796030.0	5677278.0
264	<i>C. selloana</i>	NI	1796030.0	5677278.0
265	<i>C. selloana</i>	NI	1798162.0	5674155.0
266	<i>C. selloana</i>	NI	1798162.0	5674155.0
267	<i>C. selloana</i>	NI	1798162.0	5674155.0

ID	Species	Island	EastTM	NorthTM
268	<i>C. selloana</i>	NI	1792625.0	5696595.0
269	<i>C. selloana</i>	NI	1792625.0	5696595.0
270	<i>C. selloana</i>	NI	1792625.0	5696595.0
271	<i>C. selloana</i>	NI	1870950.0	5538765.0
272	<i>C. selloana</i>	NI	1870950.0	5538765.0
273	<i>C. selloana</i>	NI	1870950.0	5538765.0
274	<i>C. selloana</i>	NI	1845608.0	5530618.0
275	<i>C. selloana</i>	NI	1845608.0	5530618.0
276	<i>C. selloana</i>	NI	1845608.0	5530618.0
277	<i>C. selloana</i>	NI	1793067.5	5512797.3
278	<i>C. selloana</i>	NI	1793067.5	5512797.3
279	<i>C. selloana</i>	NI	1793067.5	5512797.3
280	<i>C. selloana</i>	NI	1793067.5	5512797.3
281	<i>C. selloana</i>	NI	1801570.2	5548594.4
282	<i>C. selloana</i>	NI	1801570.2	5548594.4
283	<i>C. selloana</i>	NI	1801570.2	5548594.4
284	<i>C. selloana</i>	NI	1801570.2	5548594.4
285	<i>C. selloana</i>	NI	1792349.2	5549061.5
286	<i>C. selloana</i>	NI	1792349.2	5549061.5
287	<i>C. selloana</i>	NI	1792349.2	5549061.5
288	<i>C. selloana</i>	NI	1815607.0	5525969.9
289	<i>C. selloana</i>	NI	1815607.0	5525969.9
290	<i>C. selloana</i>	NI	1815607.0	5525969.9
291	<i>C. selloana</i>	NI	1815607.0	5525969.9
292	<i>C. selloana</i>	NI	1824862.2	5466308.5
293	<i>C. selloana</i>	NI	1823352.5	5471932.8
294	<i>C. selloana</i>	NI	1823352.5	5471932.8
295	<i>C. selloana</i>	NI	1823352.5	5471932.8
296	<i>C. selloana</i>	NI	1821097.6	5478883.2
297	<i>C. selloana</i>	NI	1821097.6	5478883.2
298	<i>C. selloana</i>	NI	1821097.6	5478883.2
299	<i>C. selloana</i>	NI	1821097.6	5478883.2
300	<i>C. selloana</i>	NI	1831481.7	5486820.0
301	<i>C. selloana</i>	NI	1837219.9	5487125.8
302	<i>C. selloana</i>	NI	1837219.9	5487125.8
303	<i>C. selloana</i>	NI	1833625.7	5481370.3
304	<i>C. selloana</i>	NI	1833625.7	5481370.3
305	<i>C. selloana</i>	NI	1830179.6	5446070.7
306	<i>C. selloana</i>	NI	1827662.8	5481743.7
307	<i>C. selloana</i>	NI	1827662.8	5481743.7
308	<i>C. selloana</i>	NI	1827662.8	5481743.7
309	<i>C. selloana</i>	NI	1827662.8	5481743.7
310	<i>C. selloana</i>	NI	1825201.7	5475756.4
311	<i>C. selloana</i>	NI	1825201.7	5475756.4
312	<i>C. selloana</i>	NI	1825201.7	5475756.4
313	<i>C. selloana</i>	NI	1825201.7	5475756.4
314	<i>C. selloana</i>	NI	1825127.4	5471346.3
315	<i>C. selloana</i>	NI	1825127.4	5471346.3
316	<i>C. selloana</i>	NI	1825127.4	5471346.3
317	<i>C. selloana</i>	NI	1825127.4	5471346.3
318	<i>C. selloana</i>	NI	1829183.1	5475504.7
319	<i>C. selloana</i>	NI	1825951.7	5463428.5
320	<i>C. selloana</i>	NI	1825951.7	5463428.5
321	<i>C. selloana</i>	NI	1825951.7	5463428.5
322	<i>C. selloana</i>	NI	1825951.7	5463428.5
323	<i>C. selloana</i>	NI	1831301.1	5465083.1
324	<i>C. selloana</i>	NI	1834153.2	5468528.9
325	<i>C. selloana</i>	NI	1834153.2	5468528.9
326	<i>C. selloana</i>	NI	1834153.2	5468528.9
327	<i>C. selloana</i>	NI	1834153.2	5468528.9
328	<i>C. selloana</i>	NI	1838673.3	5483824.3
329	<i>C. selloana</i>	NI	1838673.3	5483824.3
330	<i>C. selloana</i>	NI	1838673.3	5483824.3
331	<i>C. selloana</i>	NI	1838673.3	5483824.3
332	<i>C. selloana</i>	NI	1840722.7	5482079.5
333	<i>C. selloana</i>	NI	1840722.7	5482079.5
334	<i>C. selloana</i>	NI	1840931.0	5471560.0
335	<i>C. selloana</i>	NI	1840931.0	5471560.0

ID	Species	Island	EastTM	NorthTM
336	<i>C. selloana</i>	NI	1840931.0	5471560.0
337	<i>C. selloana</i>	NI	1840931.0	5471560.0
338	<i>C. selloana</i>	NI	1835363.4	5455365.0
339	<i>C. selloana</i>	NI	1835363.4	5455365.0
340	<i>C. selloana</i>	NI	1835363.4	5455365.0
341	<i>C. selloana</i>	NI	1835363.4	5455365.0
342	<i>C. selloana</i>	NI	1837964.5	5450227.7
343	<i>C. selloana</i>	NI	1837964.5	5450227.7
344	<i>C. selloana</i>	NI	1837964.5	5450227.7
345	<i>C. selloana</i>	NI	1837964.5	5450227.7
346	<i>C. selloana</i>	NI	1837721.0	5445942.4
347	<i>C. selloana</i>	NI	1821607.7	5461321.1
348	<i>C. selloana</i>	NI	1821607.7	5461321.1
349	<i>C. selloana</i>	NI	1821607.7	5461321.1
350	<i>C. selloana</i>	NI	1821607.7	5461321.1
351	<i>C. selloana</i>	NI	1824744.2	5460573.9
352	<i>C. selloana</i>	NI	1823863.3	5452152.1
353	<i>C. selloana</i>	NI	1823863.3	5452152.1
354	<i>C. selloana</i>	NI	1823863.3	5452152.1
355	<i>C. selloana</i>	NI	1823863.3	5452152.1
356	<i>C. selloana</i>	NI	1847754.9	5430275.5
357	<i>C. selloana</i>	NI	1847754.9	5430275.5
358	<i>C. selloana</i>	NI	1847754.9	5430275.5
359	<i>C. selloana</i>	NI	1847754.9	5430275.5
360	<i>C. selloana</i>	NI	1844433.9	5429155.2
361	<i>C. selloana</i>	NI	1844433.9	5429155.2
362	<i>C. selloana</i>	NI	1844433.9	5429155.2
363	<i>C. selloana</i>	NI	1844433.9	5429155.2
364	<i>C. selloana</i>	NI	1839571.0	5423371.2
365	<i>C. selloana</i>	NI	1837971.0	5437224.9
366	<i>C. selloana</i>	NI	1837971.0	5437224.9
367	<i>C. selloana</i>	NI	1837971.0	5437224.9
368	<i>C. selloana</i>	NI	1837971.0	5437224.9
369	<i>C. selloana</i>	NI	1847025.9	5436476.5
370	<i>C. selloana</i>	NI	1847025.9	5436476.5
371	<i>C. selloana</i>	NI	1851868.8	5439984.0
372	<i>C. selloana</i>	NI	1854769.1	5443709.8
373	<i>C. selloana</i>	NI	1854769.1	5443709.8
374	<i>C. selloana</i>	NI	1854769.1	5443709.8
375	<i>C. selloana</i>	NI	1854769.1	5443709.8
376	<i>C. selloana</i>	NI	1856027.6	5448085.7
377	<i>C. selloana</i>	NI	1857706.8	5445693.2
378	<i>C. selloana</i>	NI	1857706.8	5445693.2
379	<i>C. selloana</i>	NI	1857706.8	5445693.2
380	<i>C. selloana</i>	NI	1857706.8	5445693.2
381	<i>C. selloana</i>	NI	1859312.7	5449169.9
382	<i>C. selloana</i>	NI	1855278.6	5450556.3
383	<i>C. selloana</i>	NI	1855278.6	5450556.3
384	<i>C. selloana</i>	NI	1855278.6	5450556.3
385	<i>C. selloana</i>	NI	1855278.6	5450556.3
386	<i>C. selloana</i>	NI	1855379.4	5459029.0
387	<i>C. selloana</i>	NI	1856465.9	5464128.0
388	<i>C. selloana</i>	NI	1856465.9	5464128.0
389	<i>C. selloana</i>	NI	1856465.9	5464128.0
390	<i>C. selloana</i>	NI	1856465.9	5464128.0
391	<i>C. selloana</i>	NI	1859675.7	5467948.1
392	<i>C. selloana</i>	NI	1862951.3	5472056.9
393	<i>C. selloana</i>	NI	1862951.3	5472056.9
394	<i>C. selloana</i>	NI	1862951.3	5472056.9
395	<i>C. selloana</i>	NI	1867462.3	5471808.9
396	<i>C. selloana</i>	NI	1867462.3	5471808.9
397	<i>C. selloana</i>	NI	1871545.4	5467206.8
398	<i>C. selloana</i>	NI	1871545.4	5467206.8
399	<i>C. selloana</i>	NI	1871545.4	5467206.8
400	<i>C. selloana</i>	NI	1871545.4	5467206.8
401	<i>C. selloana</i>	NI	1873384.7	5472567.2
402	<i>C. selloana</i>	NI	1874813.2	5477506.2
403	<i>C. selloana</i>	NI	1858199.0	5475997.1

ID	Species	Island	EastTM	NorthTM
404	<i>C. selloana</i>	NI	1858199.0	5475997.1
405	<i>C. selloana</i>	NI	1858199.0	5475997.1
406	<i>C. selloana</i>	NI	1858199.0	5475997.1
407	<i>C. selloana</i>	NI	1858156.0	5482316.1
408	<i>C. selloana</i>	NI	1849450.4	5466188.9
409	<i>C. selloana</i>	NI	1824450.8	5463785.7
410	<i>C. selloana</i>	NI	1845499.7	5464808.1
411	<i>C. selloana</i>	NI	1840254.0	5462259.3
412	<i>C. selloana</i>	NI	1833969.5	5461019.8
413	<i>C. selloana</i>	NI	1824172.9	5446246.9
414	<i>C. selloana</i>	NI	1823880.9	5435888.6
415	<i>C. selloana</i>	NI	1822753.8	5426311.4
416	<i>C. selloana</i>	NI	1818420.8	5427796.5
417	<i>C. selloana</i>	NI	1814101.2	5431101.7
418	<i>C. selloana</i>	NI	1809567.9	5431338.7
419	<i>C. selloana</i>	NI	1806876.4	5435268.0
420	<i>C. selloana</i>	NI	1815318.6	5449486.2
421	<i>C. selloana</i>	NI	1817987.6	5453005.6
422	<i>C. selloana</i>	NI	1816638.4	5458350.4
423	<i>C. selloana</i>	NI	1818290.7	5462164.0
424	<i>C. selloana</i>	NI	1815755.7	5464900.3
425	<i>C. selloana</i>	NI	1810689.8	5462126.2
426	<i>C. selloana</i>	NI	1811383.0	5456610.3
427	<i>C. selloana</i>	NI	1807235.2	5454352.7
428	<i>C. selloana</i>	NI	1809093.6	5451876.6
429	<i>C. selloana</i>	NI	1806951.6	5450339.8
430	<i>C. selloana</i>	NI	1803165.1	5447096.1
431	<i>C. selloana</i>	NI	1795850.9	5445439.0
432	<i>C. selloana</i>	NI	1797766.4	5450003.3
433	<i>C. selloana</i>	NI	1798773.1	5441874.7
434	<i>C. selloana</i>	NI	1805725.4	5440804.3
435	<i>C. selloana</i>	NI	1807825.0	5446701.6
436	<i>C. selloana</i>	NI	1821346.9	5446097.7
437	<i>C. selloana</i>	NI	1819194.8	5441210.8
438	<i>C. selloana</i>	NI	1816738.1	5436588.3
439	<i>C. selloana</i>	NI	1808002.4	5412172.1
440	<i>C. selloana</i>	NI	1809596.2	5404629.1
441	<i>C. selloana</i>	NI	1811748.7	5403228.3
442	<i>C. selloana</i>	NI	1799867.3	5395624.6
443	<i>C. selloana</i>	NI	1804587.0	5432920.2
444	<i>C. selloana</i>	NI	1800161.9	5429830.9
445	<i>C. selloana</i>	NI	1789661.3	5424115.3
446	<i>C. selloana</i>	NI	1784909.4	5421307.8
447	<i>C. selloana</i>	NI	1782204.4	5416636.9
448	<i>C. selloana</i>	NI	1785518.0	5409928.4
449	<i>C. selloana</i>	NI	1784410.5	5405515.2
450	<i>C. selloana</i>	NI	1788560.4	5391681.3
451	<i>C. selloana</i>	NI	1779251.8	5415341.0
452	<i>C. selloana</i>	NI	1791751.6	5430060.6
453	<i>C. selloana</i>	NI	1795737.8	5433438.6
454	<i>C. selloana</i>	NI	1802652.3	5445232.6
455	<i>C. selloana</i>	NI	1793998.8	5446272.2
456	<i>C. selloana</i>	NI	1785881.8	5436957.8
457	<i>C. selloana</i>	NI	1779172.8	5424100.0
458	<i>C. selloana</i>	NI	1777732.2	5420243.5
459	<i>C. selloana</i>	NI	1773831.6	5417258.7
460	<i>C. selloana</i>	NI	1776456.9	5417805.1
461	<i>C. selloana</i>	NI	1783487.1	5424044.8
462	<i>C. selloana</i>	NI	1782042.0	5449651.3
463	<i>C. selloana</i>	NI	1777817.8	5446180.9
464	<i>C. selloana</i>	NI	1775397.0	5442616.4
465	<i>C. selloana</i>	NI	1762941.8	5437218.6
466	<i>C. selloana</i>	NI	1759418.3	5419908.1
467	<i>C. selloana</i>	NI	1758255.3	5437348.3
468	<i>C. selloana</i>	NI	1761154.7	5438637.4
469	<i>C. selloana</i>	NI	1766061.8	5443696.1
470	<i>C. selloana</i>	NI	1762557.1	5446415.9
471	<i>C. selloana</i>	NI	1759742.8	5447752.2

ID	Species	Island	EastTM	NorthTM
472	<i>C. selloana</i>	NI	1757452.8	5447964.4
473	<i>C. selloana</i>	NI	1754830.0	5444780.7
474	<i>C. selloana</i>	NI	1753560.0	5438493.9
475	<i>C. selloana</i>	NI	1751012.2	5426048.1
476	<i>C. selloana</i>	NI	1752549.5	5426694.0
477	<i>C. selloana</i>	NI	1753273.9	5425306.4
478	<i>C. selloana</i>	NI	1753272.7	5425306.7
479	<i>C. selloana</i>	NI	1752515.3	5421686.7
480	<i>C. selloana</i>	NI	1752515.5	5421687.3
481	<i>C. selloana</i>	NI	1749856.3	5422727.4
482	<i>C. selloana</i>	NI	1747289.8	5421320.7
483	<i>C. selloana</i>	NI	1747289.7	5421320.6
484	<i>C. selloana</i>	NI	1749394.9	5421915.1
485	<i>C. selloana</i>	NI	1744211.3	5427439.2
486	<i>C. selloana</i>	NI	1743153.7	5425904.9
487	<i>C. jubata</i>	SI	1596573.5	5447480.1 *
488	<i>C. jubata</i>	SI	1605675.5	5433801.1 *
489	<i>C. jubata</i>	SI	1601311.5	5456708.8 *
490	<i>C. jubata</i>	SI	1594926.0	5416442.5 *
491	<i>C. jubata</i>	SI	1574552.2	5491420.8 *
492	<i>C. jubata</i>	SI	1585584.0	5477081.5 *
493	<i>C. jubata</i>	SI	1579246.5	5478275.5 *
494	<i>C. jubata</i>	SI	1591606.4	5479940.3 *
495	<i>C. jubata</i>	SI	1572721.9	5496374.2 *
496	<i>C. jubata</i>	SI	1560427.0	5479169.4
497	<i>C. jubata</i>	SI	1557973.4	5168122.8 *
498	<i>C. jubata</i>	SI	1568000.7	5178388.8 *
499	<i>C. jubata</i>	NI	1764539.9	5916115.3
500	<i>C. jubata</i>	NI	1727947.1	5932192.9
501	<i>C. jubata</i>	NI	1778430.1	5936645.5 *
502	<i>C. jubata</i>	NI	1787044.5	5991603.0 *
503	<i>C. jubata</i>	NI	1710936.0	5640264.7 *
504	<i>C. jubata</i>	NI	1736575.5	5916261.4 *
505	<i>C. jubata</i>	NI	1746578.0	5914281.6 *
506	<i>C. jubata</i>	NI	1749121.0	5970286.0
507	<i>C. jubata</i>	NI	1750215.0	5930235.0
508	<i>C. jubata</i>	NI	1746433.0	5914041.0
509	<i>C. jubata</i>	NI	1785851.3	5926358.8
510	<i>C. jubata</i>	NI	1785851.3	5926358.8
511	<i>C. jubata</i>	NI	1788364.2	5927192.1
512	<i>C. jubata</i>	NI	1788364.2	5927192.1
513	<i>C. jubata</i>	NI	1785704.9	5923596.6
514	<i>C. jubata</i>	NI	1791035.0	5921586.8
515	<i>C. jubata</i>	NI	1791035.0	5921586.8
516	<i>C. jubata</i>	NI	1791035.0	5921586.8
517	<i>C. jubata</i>	NI	1791035.0	5921586.8
518	<i>C. jubata</i>	NI	1791035.0	5921586.8
519	<i>C. jubata</i>	NI	1791035.0	5921586.8
520	<i>C. jubata</i>	NI	1740474.0	5903516.0
521	<i>C. jubata</i>	NI	1740474.0	5903516.0
522	<i>C. jubata</i>	NI	1740907.0	5911976.0
523	<i>C. jubata</i>	NI	1740907.0	5911976.0
524	<i>C. jubata</i>	NI	1745790.0	5909030.0
525	<i>C. jubata</i>	NI	1735791.0	5900841.0
526	<i>C. jubata</i>	NI	1735791.0	5900841.0
527	<i>C. jubata</i>	NI	1873689.1	5818899.5
528	<i>C. jubata</i>	NI	1873689.1	5818899.5
529	<i>C. jubata</i>	NI	1722210.0	6048386.0
530	<i>C. jubata</i>	NI	1722210.0	6048386.0
531	<i>C. jubata</i>	NI	1722210.0	6048388.0
532	<i>C. jubata</i>	NI	1722210.0	6048393.0
533	<i>C. jubata</i>	NI	1853086.0	5838049.0
534	<i>C. jubata</i>	NI	1834759.0	5922798.0
535	<i>C. jubata</i>	NI	1834759.0	5922798.0
536	<i>C. jubata</i>	NI	1834759.0	5922798.0
537	<i>C. jubata</i>	NI	1834759.0	5922798.0
538	<i>C. jubata</i>	NI	1832448.0	5925141.0
539	<i>C. jubata</i>	NI	1848118.0	5932643.0

ID	Species	Island	EastTM	NorthTM
540	<i>C. jubata</i>	NI	1848118.0	5932643.0
541	<i>C. jubata</i>	NI	1802735.4	5561976.8
542	<i>C. jubata</i>	NI	1802735.4	5561976.8
543	<i>C. jubata</i>	NI	1802735.4	5561976.8
544	<i>C. jubata</i>	NI	1838903.1	5605563.0
545	<i>C. jubata</i>	NI	1838903.1	5605563.0
546	<i>C. jubata</i>	NI	1838903.1	5605563.0
547	<i>C. jubata</i>	NI	1838903.1	5605563.0
548	<i>C. jubata</i>	NI	1838903.1	5605563.0
549	<i>C. jubata</i>	NI	1838903.1	5605563.0
550	<i>C. jubata</i>	NI	1765584.1	5596119.0
551	<i>C. jubata</i>	NI	1916372.2	5772431.7
552	<i>C. jubata</i>	NI	1916372.2	5772431.7
553	<i>C. jubata</i>	NI	1916372.2	5772431.7
554	<i>C. jubata</i>	NI	1934957.7	5777814.9
555	<i>C. jubata</i>	NI	1934018.4	5757178.1
556	<i>C. jubata</i>	NI	1934018.4	5757178.1
557	<i>C. jubata</i>	NI	1934018.4	5757178.1
558	<i>C. jubata</i>	NI	1695041.0	5674946.0
559	<i>C. jubata</i>	NI	1695041.0	5674946.0
560	<i>C. jubata</i>	NI	1695041.0	5674946.0
561	<i>C. jubata</i>	NI	1861818.0	5546302.0
562	<i>C. jubata</i>	NI	1861818.0	5546302.0
563	<i>C. jubata</i>	NI	1861818.0	5546302.0
564	<i>C. jubata</i>	NI	1803340.7	5548329.7
565	<i>C. jubata</i>	NI	1815609.0	5525970.9
566	<i>C. jubata</i>	NI	1815609.0	5525970.9
567	<i>C. jubata</i>	NI	1815609.0	5525970.9
568	<i>C. jubata</i>	NI	1815609.0	5525970.9
569	<i>C. jubata</i>	NI	1815609.0	5525970.9
570	<i>C. jubata</i>	NI	1807540.5	5420505.7
571	<i>C. jubata</i>	NI	1786370.5	5393526.2
572	<i>C. jubata</i>	NI	1771819.8	5437511.2
573	<i>C. jubata</i>	NI	1769602.7	5441106.4
574	<i>C. jubata</i>	NI	1766812.3	5442260.9
575	<i>C. jubata</i>	NI	1763111.2	5430235.3
576	<i>C. jubata</i>	NI	1761577.8	5424448.0
577	<i>C. jubata</i>	NI	1760334.3	5432918.3
578	<i>C. jubata</i>	NI	1758738.2	5426765.2
579	<i>C. jubata</i>	NI	1756498.0	5435016.4
580	<i>C. jubata</i>	NI	1759353.0	5438464.6
581	<i>C. jubata</i>	NI	1764080.2	5440400.6
582	<i>C. jubata</i>	NI	1769964.8	5445047.5

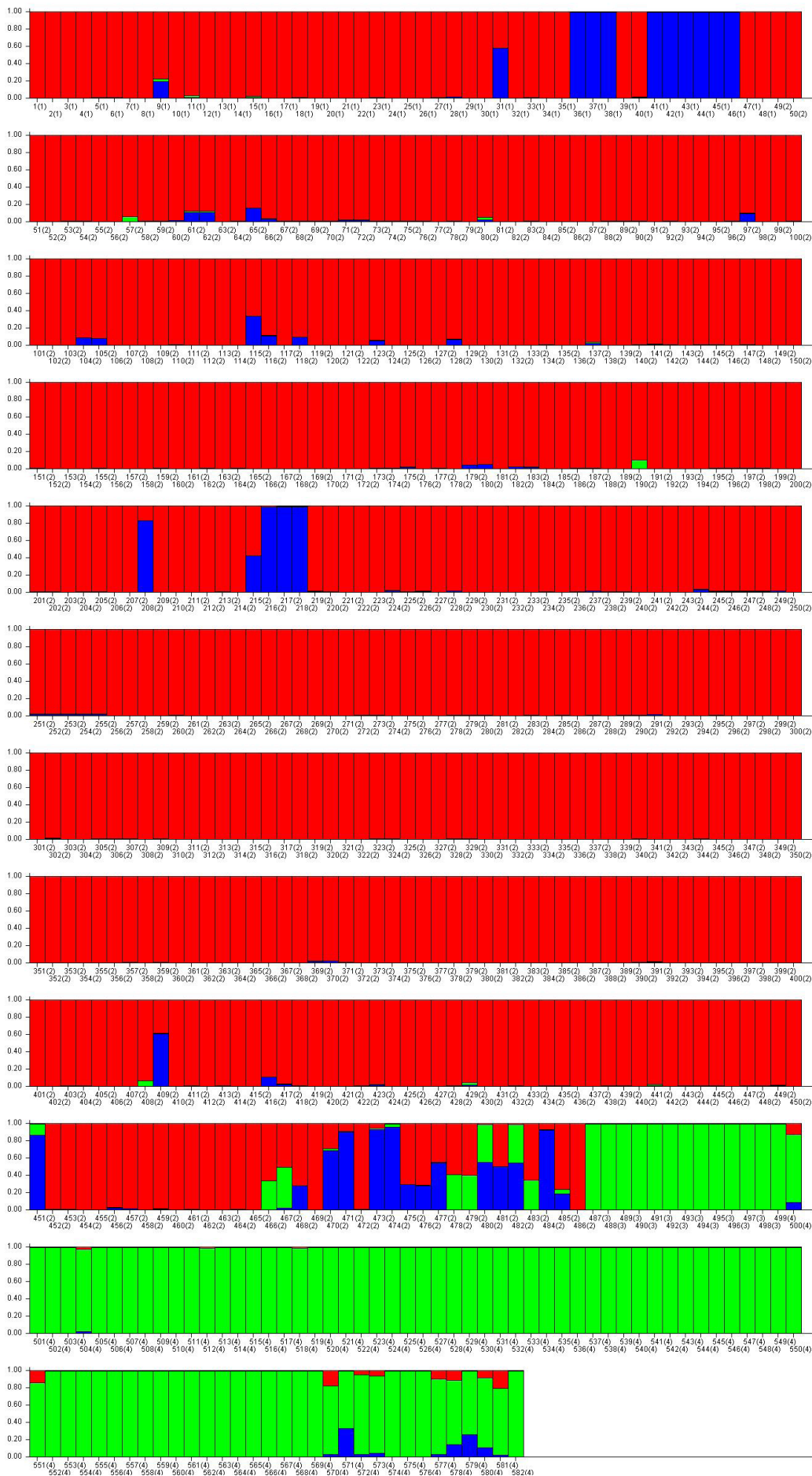


Figure S2. STRUCTURE plot of the whole dataset including *Cortaderia selloana* (two divisions – red and blue) and *C. jubata* (one division – green). The value of *K* was chosen using STRUCTURE Harvester (Earl & von Holdt 2012).

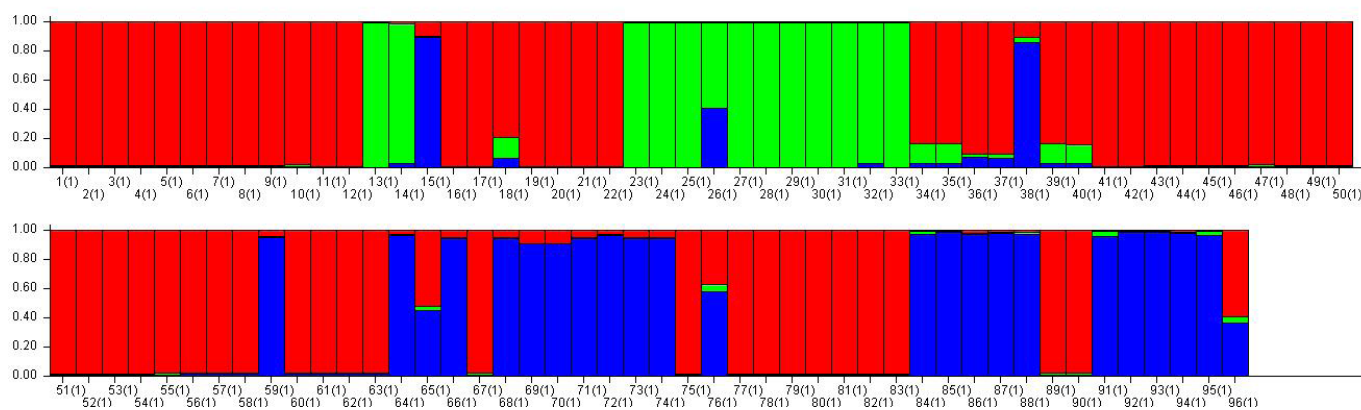


Figure S3. STRUCTURE plot for *C. jubata* only, showing $K = 3$ as chosen by STRUCTURE Harvester (Earl & von Holdt 2012). Order of samples is as in Table S1 for *C. jubata*, with the first 12 samples being from the South Island, and all remaining samples from the North Island.

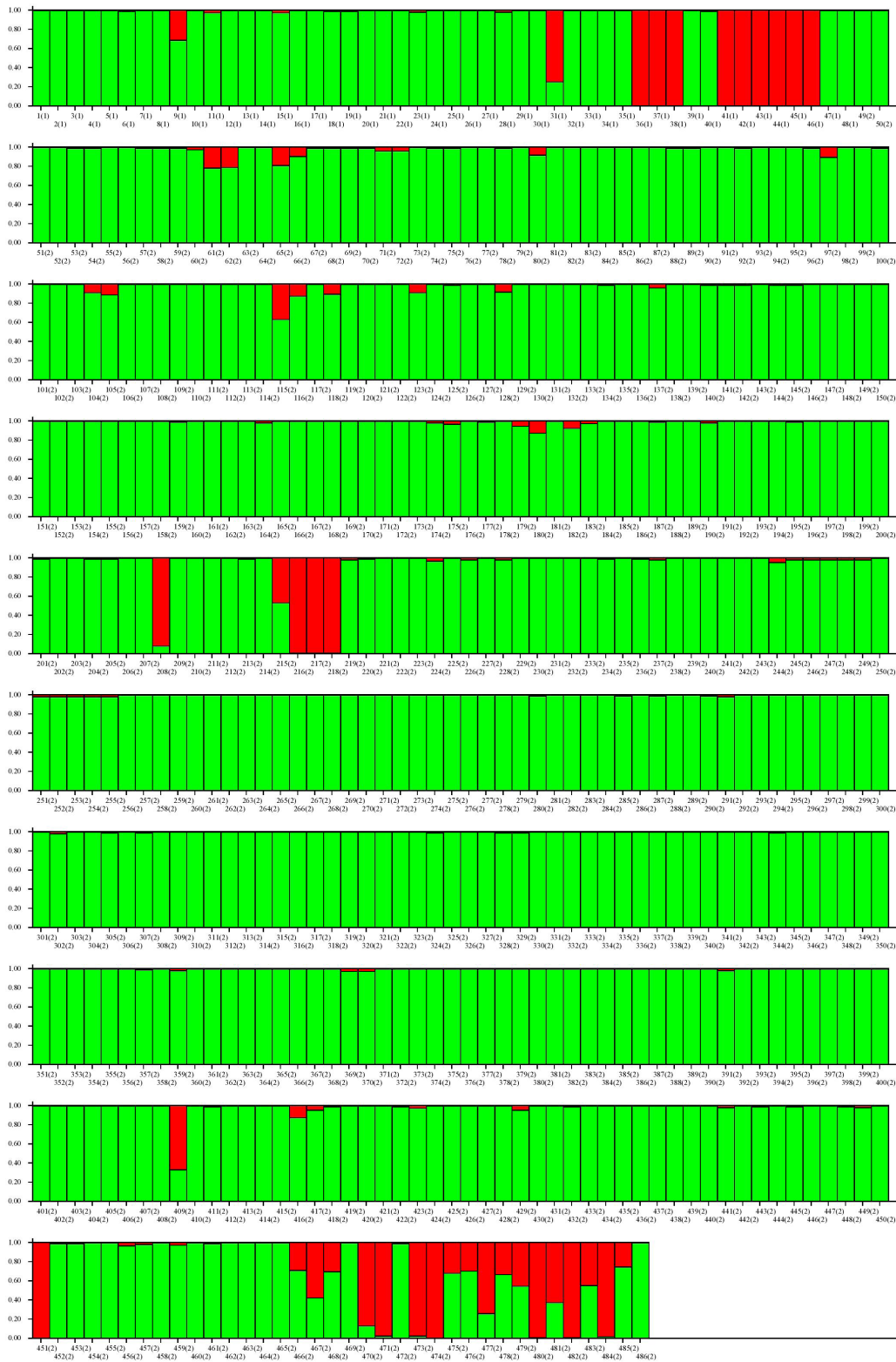


Figure S4. STRUCTURE plot for *C. selloana* only, showing $K = 2$ as chosen by STRUCTUREHarvester (Earl & von Holdt 2012). Order of samples is as in Table S1 for *C. selloana*. The first 48 samples are from the South Island and the remaining 438 are from the North Island.

Reference

Earl DA, von Holdt BM 2012. STRUCTURE HARVESTER: a website and program for visualizing STRUCTURE output and implementing the Evanno method. Conservation Genetics Resources 4: 359–361.